

**ENGLISH NATIONAL BALLET SCHOOL  
SPRING INTENSIVE COURSE 2024  
STUDENT APPLICATION PACK**

If you are aged 13-16 years and interested in experiencing life at English National Ballet School, make sure to apply for our Spring Intensive Course. Taught by the ENBS faculty, students will have the opportunity to attend three days of training at our School in Chelsea. The course is designed to give students a taster of life at English National Ballet School and the course will consist of daily ballet classes, repertoire and/or variations classes, contemporary and choreography.

On the final day, students will be coached on how to prepare for auditions, they'll experience an audition-based class and there will be a brief Q&A for students to ask questions about the School.

Please note that students can't audition for the School during the Spring Intensive. If you are interested in joining the School in September 2024, please see the audition information on our [website](#).

**Dates & Fees**

Dates: **Wednesday 14<sup>th</sup> – Friday 16<sup>th</sup> February 2024**

Course Fee: **£350**

Participants will attend classes from approximately 9am until 5pm daily. Applicants are not required to pay the course fee until their place has been confirmed.

**Location**

The course will take place at our School in Chelsea, full address – English National Ballet School, Hortensia Road, Chelsea, SW10 0QS.

**Entry Requirements**

Students must be aged 13 - 17 (in UK school Years 9, 10, 11 and 12) and should be studying ballet to at least RAD Intermediate level (or equivalent) or above.

**Accommodation**

Please note that this course is non-residential and so students are responsible for securing their own accommodation.

## Applications

Students will be selected for the Spring Intensive based on the information in their application and through their photographs. We aim to contact all candidates within 14 days.

Applications will close on **Monday 11<sup>th</sup> December 2023**.

To complete the online application form, please click [HERE](#)

## Photograph Requirements

Both male and female applicants must include the photographs outlined on page 3 with their application. Photographs do not need to be professionally taken.

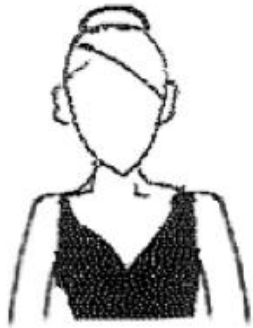
Photographs should be emailed to [courses@enbschool.org.uk](mailto:courses@enbschool.org.uk) with the subject heading the name of the applicant followed by 'Spring Intensive Application Photos'.

Applicants should wear soft ballet shoes, tights and a leotard/unitard.

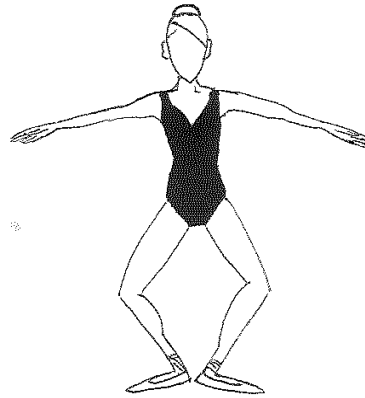
If you have a delay in sending through your photos, please still complete the online application form and send the photos as soon as you have them ready.

## Photograph Requirements

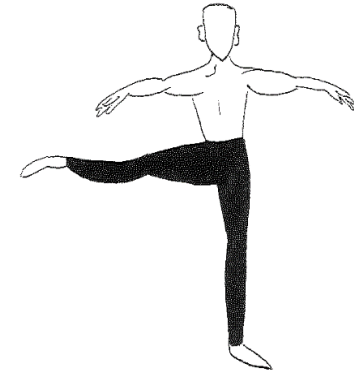
Photographs should be sent in on a word or PDF document in the order below. Photograph template forms can be found on our website. Please do not email in individual photographs. Completed forms should be sent to [courses@enbschool.org.uk](mailto:courses@enbschool.org.uk).



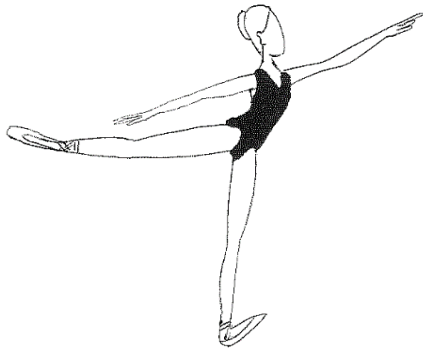
1. Head  
2. *Demi-plié* in 1st position with



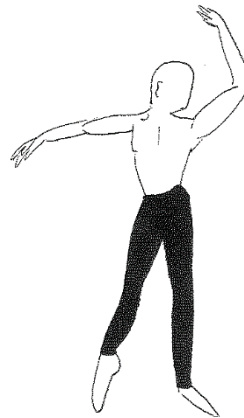
and  
3. *Développé* in 2nd with arms in 2nd  
arms in 2nd



Shoulders



4. 1st *arabesque en l'air de côté*



5. *Dégagé effacé devant*



6. 4<sup>th</sup> *en pointe* (girls only)